

A Quick Guide to Coming back to Church

July 5, 2020



Before Sunday Morning

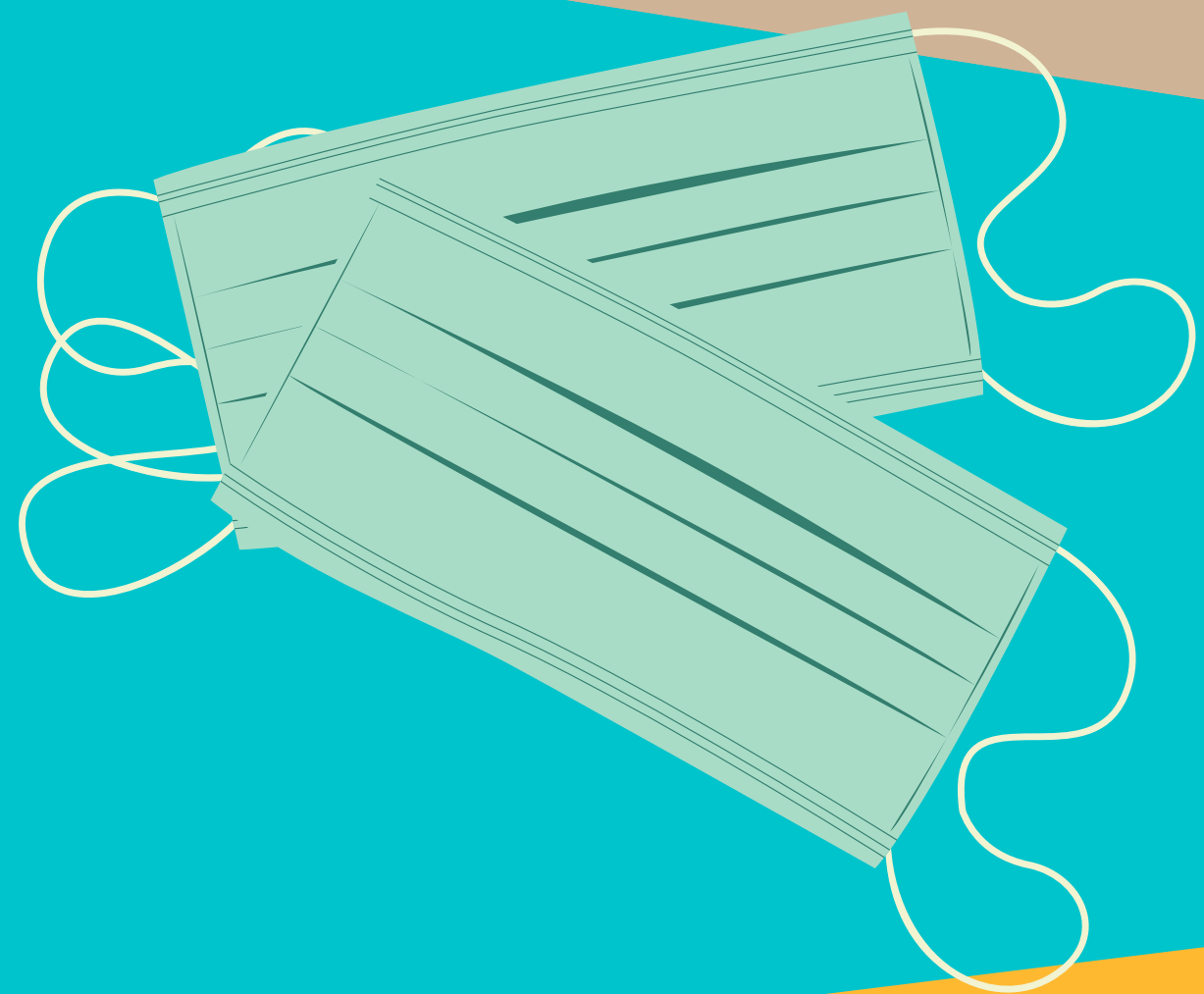
Go to AdventELC.org and sign up for how many seats and which worship service you would like to attend. **ONLY THOSE WITH RESERVATIONS** are guaranteed a seat in worship.

**Please note that the Nursery remains closed.*

What to expect when you come for worship

We are **EXCITED** to worship in person with you again. Here are a few things to expect to ensure we are all on the same page and staying safe.

- Everyone is asked to **enter and exit** through our **main entrance**.
- **Wearing a mask is a must** and we ask that you keep it covering your mouth and nose throughout the time we are gathered, with the exception of Communion. Children 10 and under are exempt. If you forget your mask we will have extra at the front door.
- There are **Hand Sanitizing** stations located at each entrance.
- You will be checked in and guided by an usher to gather your elements for Holy Communion and then to your assigned seats.
- **Bathrooms** are to be used on a limited basis. If used, then the user is asked to sanitize their station.
- The **Kitchen** and **Fellowship Hall** are off limits and there will be no coffee served.



During Worship & Communion

- Bulletins will not be provided. The graphics for worship will be projected. If you prefer a paper copy we ask that you print, bring, and take home a copy with you. You may also bring portable electronics and download the bulletin.
- The Passing of the Peace will be no contact
- You are to pick up Communion elements on your way into the Sanctuary and dispose of the empty cup and plastic in the receptacle on your way out.
- In-person worshippers are asked to not sing along to songs, rather to focus on reading the lyrics to enhance their worship experience. The music will be offered by music leaders only.
- Refrain from handshakes and hugs.
- There will be an offering plate available in the narthex. If possible, please continue to give online as this is safest for our counters.